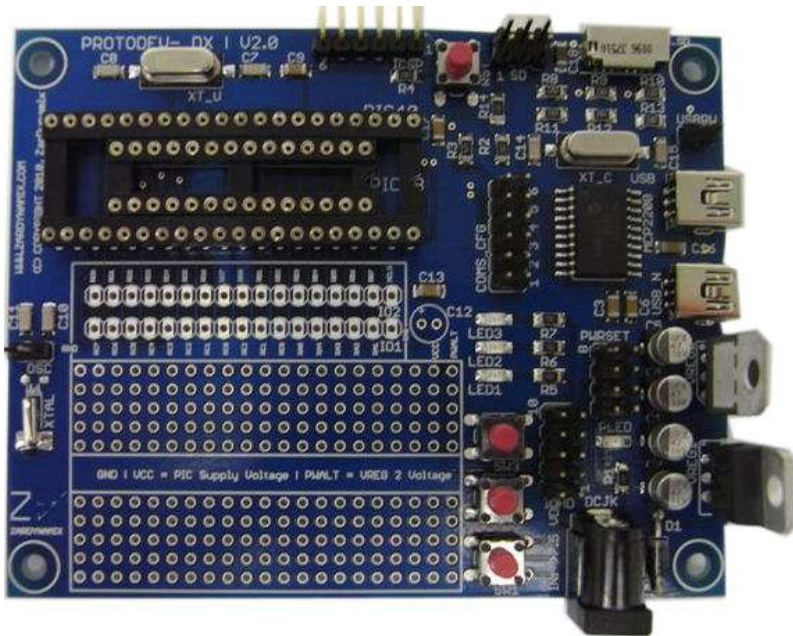


ProtoDev – DX REV 2.0

The **ProtoDev-DX V2.0** is a compact and feature rich development PCB designed for the hobbyist and professional. Supporting both 28 and 40 PIN DIP packages, the **ProtoDev-DX V2.0** offers a cost effective, practical solution for PIC embedded development.

New Features

- Micro SD Card Holder
- Additional LED and Push Button hardwired to the PIC
- Two Mini USB Connectors
- Sample code installed on the PIC Device
- MCP2200 USB Emulation Device



Product Description

Delivered fully assembled and capable of supporting both standard F and J type PIC devices for both 16Fxx and 18 Fxx families, the PCB has 2 voltage regulators (3v3 and 5 Vdc), RS 232 to USB emulation, ICSP, ICD, Reset button, 3 Push Button switches, 3 LEDs and a watch crystal for additional timing applications. A prototyping area with horizontally connected pads makes for easy proof of concept design and development with additional devices e.g. LCD display or LM35 temperature sensor. The PCB can be powered from a standard wall socket AC to DC converter power supply.

The hosted device can be programmed using an ICSP or ICD compatible on PCB socket or header. Communications to a PC is simple and easy using the Microchip MCP2200 USB to RS232 emulator and mini USB connector makes connection simple. A secondary USB connector is available for native USB development.

The adjacent prototyping (like strip board) area enables the developer to solder in additional components and devices. All PIC I/O is tracked to the connector strip and labelled, which is located conveniently close to the prototyping area.

ProtoDev Features	
Power Supply	3v3 / 5Vdc
Programming	ICSP and ICD 2 compatible interfaces
Communications	FTDI RTL232 USB to RS232 Emulation DUAL USB Connectors
I/O	3 LEDs + 3 Push Buttons
PIC Support	28 PIN DIP 40 PIN DIP
Families	F: 16Fxx 18Fxx J:18FXX
Oscillator	8Mhz Crystal Watch crystal
MEDIA	MICRO SD Card Holder